



# Newsletter

Volume 36, No 06 June 2019 No. 351

Opinions expressed in this Newsletter are not necessarily those of the Editor, the Board of Directors, or the Executive Committee of Woodgroup SA Inc.

Correspondence to  
the Secretary

Woodgroup SA Inc web page:-  
[www.woodgroupsa.org.au](http://www.woodgroupsa.org.au)

## Woodgroup SA— Member Clubs

Club	Contact	Phone
Northern Turners Inc	Ken Allen	
Western Woodworkers Inc	Christine O'Brien	0477 973 399
Murrayland Turners Inc	Mal Taylor	0428 991 424
Sculptors & Carvers Inc	Graham Jones	08 8260 2827
Whyalla Woodies Inc	Robin Sandy	08 8645 0047
Hills Woodworkers Inc	Ron Burke	08 8389 8574
Coppercoast		
South Oz Scrollers Inc	Mike Donnellan	08 8370 0108
Riverland Woodworkers Inc	Brian Lock	08 8586 4916
Toymendous Inc	Ron Crowhurst	08-82640034
Southern Turners Inc	Simon Bagshaw	0416288747
Riverside Community Woodgroup	Brian Jones	
Fleurieu Woodturners	Bill Eden	

## WOODGROUP CONTACT DETAILS

Contact the Secretary  
Email—

Contact the Newsletter Editor  
(George Pastuch)

Email - [newsletter@woodgroupsa.org.au](mailto:newsletter@woodgroupsa.org.au)

## COPYRIGHT PROVISIONS

Other Wood Working Clubs may use written items by Woodgroup SA members without prior permission, conditional on acknowledging the article when published. No alterations shall be made and nothing used when the author indicated it shall not be copied. Designs however may not be copied in any manner.

(George Pastuch - Editor)

## WoodgroupSA Network Meeting, , Tuesday June 11<sup>th</sup>, 2019 .

It was good to welcome Gordon Best again, and Jan Beare from Northern Turners. And Franco Lanfranchi, one of our earliest members at this venue, now seldom seen, arrived slightly later, after trying to locate where we were in the complex—in a corner of the ballroom. Apologies were received from Ray and Rena Hoare, diverted from this evening by family celebrations.

**Tom Jung** started the show-and-tell with a good collection of items recently finished, some from the Merry Month of May weekend at Murray Bridge with the Murrayland turners



The bowl and lid on the left is from that weekend. Participants were given the task to produce a pot pourri bowl and lid as a collaboration between a turner and a scroller. The timber was from a been a tree, not very forgiving, even using his Sorby Turnmaster



(Continued from page 1)



tool . Tom turned the 140 mm diameter bowl, then gave the wood for the lid to Ted van Dijk (from the Scrollers group), to decorate via scroll-sawing. He then turned that to fit. After a minor mishap in that process, rescued by superglue, he managed to win the “Ladies Choice” award together with Ted. (Ted should also go into the records following the weekend as the one Scroller who delicately decorated seven lids, all differently, in this joint competition with the turners).

Tom’s next item was an olive bowl, with a somewhat square profile, shown on the right, with strong grain patterns and surprisingly free of cracks and splits.

This was followed by an open bowl or deep dish, shown on the left. And finally, in the image below, firstly was a “thimble pot” or “gin sampler” in mulberry (*Morus species*), that started out as a Southern Turners exercise to make a long wooden stethoscope after the style of ones devised in the 1800’s by the medical profession. After several attempts in which the long thin stem of the device came apart, he figured that a bell end would make a nice little pot. It did!

To the right of that in the image is his effort at a lidded goblet about 200 mm tall, turned out of what appeared to be fine-grained oregon (Douglas fir). He finished this in CA glue to seal it completely against liquids.



**John Bennett’s** efforts were firstly, his attempt at a pot pourri bowl at the Merry Month of May weekend, but without collaboration -he was too slow to warrant any, he said. Instead, after discovering a crack on the side of the wall of the white cedar bowl, he enlarged that and added 7 more. No scrolled lid, no prizes! Later, the overall appearance was improved by drilling small holes in patterns that followed the strongly contrasty grain of this wood -a pain to scroll-saw with its alternating soft springwood and hard slow growth bands. So far, the lid is unadorned, but requires further work to decorate it and get it to fit now the bowl and lid have distorted slightly since



(Continued on page 3)

### **SCROLL SAW BLADES**

We are the original Australian Distributors for the Swiss made **Pegas** blades.

These are available in both plain end and pinned.

We also sell the German made **Flying Dutchman** blades.

Plain end are \$5.00 a dozen. Pinned are \$6.50 a dozen.

3” pinned blades are \$5.50 a dozen. Coping saw blades are \$5.50 a dozen.

We also sell -

Mini chucks and mini twist drills.

**Pegas Blade Chuck Heads for Excalibur**

**Also available for DeWalt by order**

We are also agents for all Hegner products including the Hegner Drum Sander.

All prices are plus postage.

Contact us for a blade catalogue

**Helen Harris**

PO Box 1384, Murray Bridge SA 5253

0428 826 224      08 8531 3440

ochjh@scrolling.com.au

being turned.

His second item was another work still in progress, also a stethoscope, or perhaps an old style hearing horn, turned out of red gum. The tricky bit is shaping the interior to follow an exponential horn (which distorts sound minimally), and getting the wall thickness small and uniform. He intends to put a larger bell on the wider end. We wait and see.

**Graham Were** brought along his long-hole boring bit or “gun bit”, for our edification, following on from last month’s discussions. His bit was about 800 mm long overall, with a cutting length of about 700 mm, hollow down its core, and fluted over that distance. It had a bore of  $\frac{3}{8}$ ” or 9.5 mm. The end holding the cutting tip was shaped in “typical spoon bit fashion”, with the cutting edge almost at right angles to the shaft length, and the opposite edge given clearance. The flute was fashioned by bending a circular tube inwards along its length. At the cutting tip, the end was almost sealed except for two small holes, as shown in the leftmost image. At the other end was an air-line connexion, shown in the image below. With that connexion coupled to an air compressor, and the bit fed through the tailstock into the work-piece rotating in a chuck in the headstock, air is ejected from the two holes forcing chips from the cutting tip up the flute and hence out of the hole at high speed (gloves recommended). The air flow prevents the bit jamming and/or the chips forcing the bit to deviate from a hole exactly aligned with the turning axis. Such bits are very useful for drilling holes to take electrical cables for long standard lamps, among other things.

**Roger Parker**, like Tom above, had turned a lidded goblet, but out of a closer grained timber, namely red gum. This nicely shaped lidded goblet was finished in superglue to seal it. .

*(Continued on page 4)*

## SAVE 10% ON YOUR PURCHASE\*

From the home of Adelaide's largest range of woodworking products.



Woodgroup SA members NOW SAVE 10% on all purchases at Carbatec\*. Shop the best brands in machinery and hand tools, blades, bits, blanks and more! Visit our knowledgeable team in store with your proof of membership to redeem this offer.\*

**carbatec**  
THE HOME OF WOODWORKING

## CALL US DIRECT

27 Magill Road, Stepney SA 5069  
Phone 08 8362 9111

Offer applies In store only. Excludes gift cards, Festool, discounted items, and special orders. Proof of membership is required.



# CWS

[www.cwsonline.com.au](http://www.cwsonline.com.au)

Carroll's  
Woodcraft  
Supplies

*Your one stop shop for all your Woodcraft Supplies*



**Phone, email, web mail order specialists**

Carroll's Woodcraft Supplies  
Unit 2, 10-14 Capital Drive, Grovedale Vic 3216  
Phone: 03 5243 0522 Fax 03 5243 2088  
Email: [jim@cwsonline.com.au](mailto:jim@cwsonline.com.au)  
[www.cwsonline.com.au](http://www.cwsonline.com.au)

## LEDACRAFT

**LARGE RANGE! TOP QUALITY! GREAT VALUE!**

 Band saws from only \$352.00 inc gst	 Dust Extractors from only \$242.00 inc gst	 Belt&Disc Sanders from only \$385.00 inc gst	 Thicknessers from only \$1286.00 inc gst
 254mm Planer/Thicknesser Combination @ \$1485.00 inc gst	 Cast Iron Wood Lathes from only \$297.00 inc gst	 Sliding Table Panel Saws from only \$1634.00 inc gst	
 Table Saws—Large Range from only \$693.00 inc gst	 Range of Router Tables from only \$363.00 inc gst	 Oscillating Bobbin Sanders from only \$209.00 inc gst	

Visit our Showroom at  
**LEDA MACHINERY PTY LTD**  
96-98 MOORING AVENUE, NORTH PLYMPTON 5037  
[www.ledamachinery.com.au](http://www.ledamachinery.com.au)  
**WE SUBSIDISE FREIGHT COST!!**  
**Quality Woodworking Machines at Affordable Prices!**

(Continued from page 3)



Then he showed a 160 mm diameter bowl turned out of mallee root –old, hard, but beautifully grained. The original lump was considerably larger, but that was so full of holes and cracks that most of it was turned away before good solid timber appeared. But the final result was spectacular, in spite of the pain getting there. He finished



the bowl in tripleE and glow. (One of the problems met in turning roots is the amount of sand and stones that are embedded in them. These very quickly remove any edge on cutting tools, making progress very slow. The oft-repeated sharpening sacrifices the tool length quickly –even tungsten carbide finds such materials abrasive).

**Gordon Best** came with an apology –his bowl was being turned earlier in the week out of casuarina. This had come apart when he was reducing the wall thickness –casuarina seems to have internal checks that become significant weak points in the timber when they are revealed by cutting away the encompassing wood.

Gordon also came with a request for information on positive pressure dust masks that were effective but cost less than the several hundred dollars that seem to be common. He commented that his Dust-be-Gone mask was not effective except against chips, because the seal against the face was poor. Tom suggested that an industrial grade twin respirator with face shield would be much better, since the neoprene seals mould much better to the face (provided you are clean shaven). Filters for these masks can filter out fumes, dusts, and vapours. For the bearded

(Continued on page 5)

(Continued from page 4)

folk, full faceshield models with positive air flow are the only answer, but these are more expensive. (Tests have shown that required airflow rates are around 20-30 litres/minute to maintain performance with low physical activity).

**Jan Beare** followed Gordon with a couple of interesting items. Her first one was an “egg- box” –or was it an “avocado-box”, turned out of juniper. This was a box where the two parts swivelled apart on a well-hidden pivot, rather than opening via hinges on one side. She described the process she used for making it –somewhat after the following approach: hollow two pieces, carefully mark the position of the centre of the pivot pin, drill these out to be a firm fit for a dowel, and note the depth and position. Then join the two pieces with a little hot-melt glue, turn the outsides between centres, being constantly aware of the depth of the inside recesses and the pivot holes. Once finished, warm up the two halves to separate them clean off the glue, glue a pivot pin in one hole, and press the other

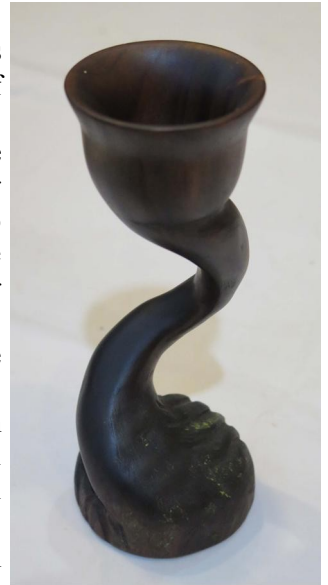
half over the end of the pivot to close the gap between them. That press fit appeared to be quite firm enough to stop them coming apart, but allows the two halves to rotate sideways to reveal hemispherical hollows on each. It is neat and attractive gift for someone who is into quirkiness.

Her second item was a turned and carved curly-stemmed goblet. The cup and base were turned to shape, then the remainder carved carefully away to produce a slow spiral stem. The base of the spiral was carved into the form of tree-roots, merging with the turned part of the base. The timber she used was just pine, firstly dyed black, then blackened more successfully with ebonising mixture. Jan said the idea for the form came from Woodturning magazine some years ago.

**Franco Lanfranchi** came with a request: How to go about restoring a thin wooden frieze around part of a Victorian era birdcage. The frieze, being fragile, had lost/split off some pieces over the passing of years, and he was keen to replace the segments of the frieze with complete patterns. The task appeared to be one where delicate scroll-sawing could be applied to achieve the desired result. Further chat brought the evening to a close –a good session it appeared to several folk.

**The next meeting will probably be on the second Tuesday in July, the 9<sup>th</sup>, at the San Georgio Community Centre, 11 Henry St, Payneham. Currently, with building renovations continuing apace, there is some uncertainty about the venue. Check the Woodgroup website for updated details closer to the date. Unusually, drinks may not be available but we shall still gather around 7:00 pm for a 7:30 start. Scrollers, carvers, boxmakers, toymakers, furniture makers, and even turners are always welcome!**

JB(text) & Alex M. (images).



***Sales, Spares, Service & Accessories***

***Our Experience and a huge range of quality products***

***is the solution to all your woodworking needs***

***1174 Old Port Road, Royal Park. Sth Aust. 5014***

***[www.woodworkingsolutions.com.au](http://www.woodworkingsolutions.com.au)    ph: 08 8241 2205***

### Mid-year greetings from Western Woodworkers.

Apologies to the editor for late submission of this article.

Our club members are busy this year, get along to the Home Show, to see some of them demonstrating wood-turning. I'm happy to see that entry is free, at the showground July 5<sup>th</sup> to 7<sup>th</sup>. Other clubs and Woodgroup SA will also be there.

In October Western Woodworkers is holding its tenth club display and exhibition at the Hamra auditorium. We are grateful for the continued support of the West Torrens library.

All clubs have been sent information about the Hahndorf Market on the 30<sup>th</sup> of November and 1<sup>st</sup> of December. Western woodies and Murrylands are running this show with Charles Greig (Woodgroup life member) as patron and consultant. If your club wants to be involved please return your registration details by the end of July at the latest, thanks.

But wait there is more! Western Woodworkers rents a workshop from St Mary's Anglican Parish, we also share some facilities. They have a community centre, op shop, community garden and a community shed, The Project Centre, with Woodworking and Metal working facilities, although the metal workshop has been idle for a couple of years. The Parish Council is looking for suitably qualified Voluntary Co-ordinators to run the workshops. The Project Centre is open Monday, Thursday and Friday 9:00 am to 3:00 pm. If interested in volunteering one or more days a week contact the centre during opening hours phone 8276 5793 or email [projectcen-tresa@gmail.com](mailto:projectcen-tresa@gmail.com)

This infomercial has been brought to you by Christine O'Brien, hopefully many of our 40 strong membership are making sawdust right now.

### The Future Of CNC Machines In Wood Working

WoodgroupSA was set up with the aim of fostering and advancing fine wood-working. Quoting 'The Role of WoodgroupSA'

"Woodgroup SA Inc does not

- ☐ deliver programs and activities for leisure woodworkers
- ☐ intervene in the day-to-day affairs of a club unless asked to do so.

It is established to

- ☐ Support the clubs by **coordinating statewide activities and events**
- ☐ Providing **services** that assist the clubs manage their operations."

Our Executive Committee wants to combine a social and training exercise, which the Board members said that they wanted, into a visit open to all club members and their partners, on one Saturday, to firstly 'Fab Lab' and later to see what is available at 'Maker Space' when it is officially opened in Adelaide.

To the traditionalists, 'Fine Woodworking' means hand tools aided by power machinery. With hand tools, a lot of thought and planning, with hours of intensive labour goes into the production of a fine piece of woodwork. CNC machines enable fast and more complex pieces to be made, in a lot less time and with a lot less labour. No one would dream of turning off the electricity and doing without the convenience of power woodworking machinery. So we should not be afraid of taking the next step into investigating CNC machines to see what benefits result.

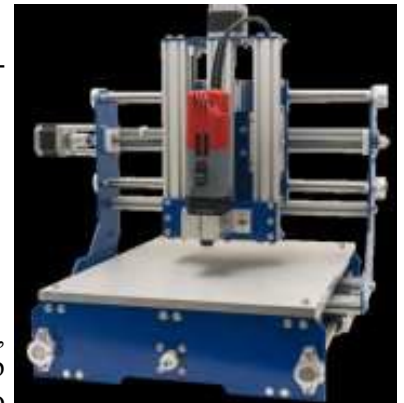
### What Do We Mean By A CNC Machine?

CNC or 'Computer Numerical Control' machines have been incorporated into a variety of new technologies and machinery. Perhaps the most common type of machine that is used in this realm is known as a 'CNC mill'.

CNC milling is a certain type of CNC machining. Milling is a process that is quite similar to drilling or cutting, and milling can perform these processes for a variety of production needs. Milling utilizes a cylindrical cutting tool that can rotate in various directions. Unlike traditional drilling, a milling cutter can move along multiple axes. It also has the capability to create a wide array of shapes, slots, holes, and other necessary impressions. Plus, the work piece of a CNC mill can be moved across the milling tool in specific directions. A drill is only able to achieve a single axis motion, which limits its overall production capability.

CNC mills are often grouped by the number of axes on which they can operate. Each axis is labelled using a

*(Continued on page 7)*





(Continued from page 6)

specific letter. For example, the X and Y axes represent the horizontal movement of the mill's work piece. The Z axis designates vertical movement. The W axis represents the diagonal movement across the vertical plane. The majority of CNC milling machines offer from 3 to 5 axes. More advanced mills must be programmed with CAM (Computer Aided Machinery) technology to run properly. These advanced CNC machines can produce specific shapes that are basically impossible to produce with any manual tooling techniques.

### What Types of Materials Do CNC Mills Use?

Nearly all types of materials that can physically be drilled or cut can be manipulated by CNC mills. Much like the processes of drilling and cutting, the appropriate CNC machine tools have to be chosen for each material being used. The density of the material at-hand, along with the rotation of the cutting tool, must be considered prior to starting the milling production process.

### What Do CNC Mills Produce?

Remember that a CNC machine which is 'subtractive' (removes wood) is the opposite to a 3D printer which is 'additive' (adds materials to build something up). In general, CNC mills are very efficient when it comes to prototyping, the short-run production of complex parts, and the fabrication of precision parts and components. But these powerful machines offer a wide range of other benefits, particularly in terms of manipulating most materials in a very efficient manner. Manual mills are still around. However, with the affordability of CNC machining today, it's without a doubt very wise to use a CNC mill that can literally transform production processes in time, precision, and quality of the materials being made.

### What barriers are there to CNC woodworking?

**The first is cost.** This has been coming down with each ensuing year, until now there are desk-models within the range of the ordinary woodworker. A club could afford one and probably put it to good use, enough use to make it worthwhile and not just be sitting in a corner as a sometimes used 'vanity piece'.

**The second is training.** Young people are taking to this kind of mental challenge like the proverbial 'ducks to water'. Mainly because they have to, technology being part of their school curriculum supporting STEM (Science, Technology, Engineering and Mathematics) activities. The latest news from Secondary Schools is that the time spent in traditional woodworking is being greatly reduced and replaced by technology such as CAD and CNC machines. Hence, we must take steps to cater for the new and younger members who are going to be joining us.



We must have the means and training to cater for their wishes in this field. This is an important thing to note in our drive to gain younger members.

**The third is ideas for what can be made.** In the future it would be possible for WoodgroupSA to set up a library of plans for WoodgroupSA clubs to use for specific machines developed by clubs for Wood-

(Continued on page 8)

### NOTE FROM THE EDITOR

The club contributions for 2019 are the same as in 2018.

### 2019 Club Contributions for the Newsletter

#### 2019

	CLUB ARTICLE
June	Western Woodworkers
July	South OZ Scrollers
August	Northern Turners
September	Southern Turners
October	Riverside Comm & Fleurieu W/turners
November	Hills Woodworkers & Copper Coast

**There is no Newsletter in December**

#### MEMBER PROFILE

Riverland Woodworkers
Riverside & Murrayland Turners
Sculptors & Carvers
South OZ Scrollers
Southern Turners
Toymendous

(Continued from page 7)

workers.

### **Where do our clubs go to get insight, training and help?**

Attendance to the WoodgroupSA Saturday Insight Workshop at 'Fab lab' and later 'Maker Space' will be a first starting point. It is there that we can find members who can assist us with purchasing, teaching assisting and servicing our machines. This will be a point of discussion at our next Executive meeting. Carbatech has already been approached to see what they can do for us in this field. With the kids coming out of school with these advanced (to us) skills, many of us are going to be left far behind unless we 'grasp the nettle' NOW!

Trevor Molde (2019 President of WoodgroupSA Inc)

### **Bibliography of useful videos on the subject**

1. CNC Dummies For Routers 14:10 <https://www.youtube.com/watch?v=YBGqknN3gGs>
2. WATCH THIS before you buy a CNC machine for 3D carving! (Updated) Published on Sep 2, 2017 <http://www.stumpy-nubs.com>
3. What is CNC Machining and How Does it Work? 6:49 <https://academy.titansofcnc.com/>
4. Top 5 INCREDIBLE CNC Machine WOOD CARVING SCULPTURE Videos || Time Lapse Woodworking 14:05 <https://www.youtube.com/watch?v=bBSaDPrlaOo&t=22s>
5. CNC Routers Can Do ALL That? - WOOD magazine 6:55 <https://www.youtube.com/watch?v=NWDrWbCbI3s&t=122s>
6. 148 CNC routers for beginner's setting up for a job 14:20 <https://www.youtube.com/watch?v=JmjluWGoR0w>